

All kids learn



# NWEA School Normative Data

Dan Henderson  
NWEA Region Manger

# NEW Norm Study



## 2012 RIT Scale School Norms User's Guide

Published 2012, NWEA Kingsbury Center

# What's the Difference?

## Student Norms

- 2011 Norm study
- Using 5.1 million students
- Compares Individual student performance
- Normative data to compare students, small groups (classes)
- Teachers most likely users

## School Norms

- 2012 Norm study
- Participating Schools nationally (weighted)
- Compares Building level data
- Normative data to compare groups of students: grade level, building
- Principals, CIAs most likely users



# What Types of Norms are Included?

- **Status**
  - Percentiles for aggregate groups by grade
  - *Individual students may perform differently than groups of students*
- **Growth (Avg. Gain)**
  - Percentiles for aggregate gain by groups by grade
  - *Individual students may grow differently than groups of students*
- **K-10 for reading & math**
- **2-10 for language**
- **3-10 for science**





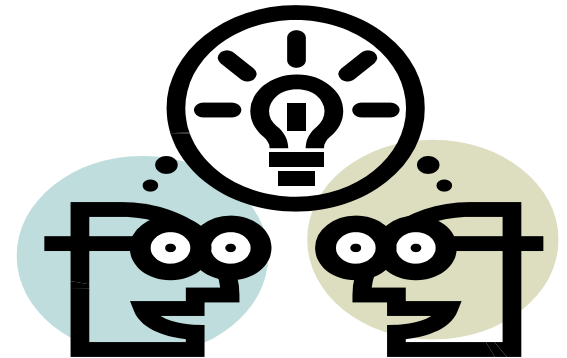
# Resources for Using School Norms

- Norms Resource Page
  - <http://www.nwea.org/support/article/norms-study-resources>
  - “User Guide” – technical user
  - “FAQ” for practitioner user
  - “Schools Norm Calculator” for practitioner user
  - “School Norms Video” for practitioner user



# Uses For School Norms

- Setting School Improvement Goals
- Setting Building Goals
- Comparing your school performance to other schools
- Reporting performance to Community



# Types of Questions the School Norms Can Address

*How does the school level performance in mathematics for our 5th graders compare to the performance of 5th graders of other schools when students are tested at about the same point during the instructional year?*



# Types of Questions the School Norms Can Address

*How does the school-level reading growth of our 4th graders, using the average of their gains, compare with the school-level reading growth of 4th graders from other schools?*





# Use the School Norm Calculator

- Download the Excel calculator at <http://www.nwea.org/support/article/norms-study-resources>
- Save to your desktop



## School Norms Calculator

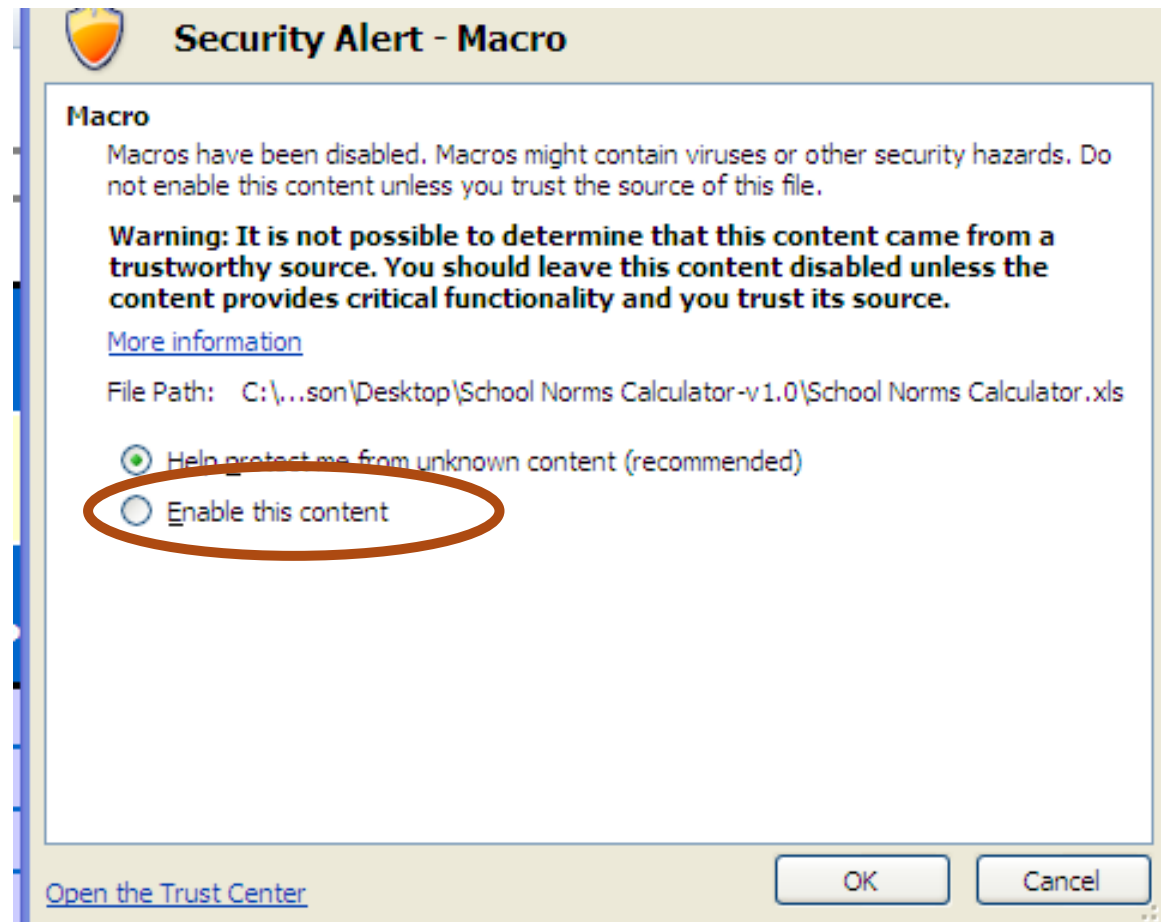
Calculate

Reset

Subject	Status			Growth				
Math	Term			Term to Term				
	<div>▼</div>							
Grade	Instructional Week Offset	Grade Mean RIT Score	School Percentile	Observed Grade Mean Growth	Grade Mean RIT Score for Start Term	Instructional Week		Mean Gain Percentile
						Start	End	
K								
1								
2								
3								
4								
5								
6								
7								
8								
9								

# Using the Calculator

## IMPORTANT! Enable the Macros



# Sample Student Growth Bldg./District Summary Report

## Student Growth District Summary - Fall 2008 to Spring 2009

District: [Redacted]

\*( Small Group Summary Display is OFF

Mathematics		Fall 2008		Spring 2009		G r o w t h			Mean Growth Target **	Growth Index	Percent of Target	Count Meeting Growth Target	Percent Meeting Growth Target
	Count	Mean RIT	Std Dev	Mean RIT	Std Dev	Mean	Std Dev	Std Error					
Grade 1	3	*	*	*	*	*	*	*	*	*	*	*	*
Grade 2	669	181.5	14.8	194.3	13.1	12.8	8.6	0.3	13.2	-0.4	97.0	338	50.5
Grade 3	650	195.4	12.4	208.3	12.6	12.9	7.5	0.3	10.5	2.4	122.5	431	66.3
Grade 4	723	205.7	13.0	217.1	14.5	11.4	7.6	0.3	9.0	2.4	126.3	480	66.4
Grade 5	672	217.3	13.3	228.0	14.9	10.7	8.2	0.3	7.2	3.5	148.7	493	73.4
Grade 6	673	223.2	16.1	232.3	16.5	9.1	8.0	0.3	6.4	2.8	143.1	455	67.6
Grade 7	204	213.7	13.4	216.2	14.7	2.5	9.2	0.6	6.6	-4.1	37.7	74	36.3
Grade 8	254	220.1	13.4	221.8	15.6	1.7	10.2	0.6	5.2	-3.5	32.5	90	35.4
Grade 9	262	226.0	12.5	226.2	14.1	0.2	9.3	0.6	2.9	-2.7	8.0	117	44.7

# Choose a Subject

## School Norms Calculator



Subject	Status			Growth					
Math	Term			Term to Term					
	Grade	Instructional Week Offset	Grade Mean RIT Score	School Percentile	Observed Grade Mean Growth	Grade Mean RIT Score for Start Term	Instructional Week		Mean Gain Percentile
							Start	End	
K									
1									
2									
3									
4									
5									
6									
7									
8									
9									



# Choose a term

## School Norms Calculator

Calculate

Reset

Subject	Status			Growth				
Math	Term	Fall		Term to Term				
Grade	Instructional Week Offset	Grade Mean RIT Score	School Percentile	Observed Grade Mean Growth	Grade Mean RIT Score for Start Term	Instructional Week		Mean Gain Percentile
						Start	End	
K	0							
1	0							
2	0							
3	0							
4	0							
5	0							
6	0							
7	0							
8	0							
9	0							
10	0							
11	0							

# Choose a Growth Period

## School Norms Calculator

Calculate

Reset

Subject	Status			Growth				
Math	Term		Fall	Term to Term				Fall to Spring
Grade	Instructional Week Offset	Grade Mean RIT Score	School Percentile	Observed Grade Mean Growth	Grade Mean RIT Score for Start Term	Instructional Week		Mean Gain Percentile
						Start	End	
K	0					4	30	
1	0					4	30	
2	0					4	30	
3	0					4	30	
4	0					4	30	
5	0					4	30	
6	0					4	30	
7	0					4	30	
8	0					4	30	
9	0					4	30	

# Sample District Growth Summary Report

## Student Growth District Summary - Fall 2008 to Spring 2009

District: [Redacted]

\*( Small Group Summary Display is OFF

Mathematics		Fall 2008		Spring 2009		G r o w t h			Mean Growth Target **	Growth Index	Percent of Target	Count Meeting Growth Target	Percent Meeting Growth Target
	Count	Mean RIT	Std Dev	Mean RIT	Std Dev	Mean	Std Dev	Std Error					
Grade 1	3	*	*	*	*	*	*	*	*	*	*	*	*
Grade 2	669	181.5	14.8	194.3	13.1	12.8	8.6	0.3	13.2	-0.4	97.0	338	50.5
Grade 3	650	195.4	12.4	208.3	12.6	12.9	7.5	0.3	10.5	2.4	122.5	431	66.3
Grade 4	723	205.7	13.0	217.1	14.5	11.4	7.6	0.3	9.0	2.4	126.3	480	66.4
Grade 5	672	217.3	13.3	228.0	14.9	10.7	8.2	0.3	7.2	3.5	148.7	493	73.4
Grade 6	673	223.2	16.1	232.3	16.5	9.1	8.0	0.3	6.4	2.8	143.1	455	67.6
Grade 7	204	213.7	13.4	216.2	14.7	2.5	9.2	0.6	6.6	-4.1	37.7	74	36.3
Grade 8	254	220.1	13.4	221.8	15.6	1.7	10.2	0.6	5.2	-3.5	32.5	90	35.4
Grade 9	262	226.0	12.5	226.2	14.1	0.2	9.3	0.6	2.9	-2.7	8.0	117	44.7

# Input Mean RIT & Observed Growth

## School Norms Calculator

Calculate

Reset

Subject	Status			Growth				
Math	Term		Fall	Term to Term				Fall to Spring
Grade	Instructional Week Offset	Grade Mean RIT Score	School Percentile	Observed Grade Mean Growth	Grade Mean RIT Score for Start Term	Instructional Week		Mean Gain Percentile
						Start	End	
K	0					4	30	
1	0					4	30	
2	0	181.5		12.8	181.5	4	30	
3	0	195.4		12.9	195.4	4	30	
4	0	205.7		11.4	205.7	4	30	
5	0	217.3		10.7	217.3	4	30	
6	0	223.2		9.1	223.2	4	30	
7	0	213.7		2.5	213.7	4	30	
8	0	220.1		1.5	220.1	4	30	
9	0	226		0.02	226	4	30	



# Status & Growth Results

## School Norms Calculator



Subject	Status			Growth				
Math	Term		Fall	Term to Term				Fall to Spring
Grade	Instructional Week Offset	Grade Mean RIT Score	School Percentile	Observed Grade Mean Growth	Grade Mean RIT Score for Start Term	Instructional Week		Mean Gain Percentile
						Start	End	
K	0					4	30	
1	0					4	30	
2	0	181.5	73	12.8	181.5	4	30	41
3	0	195.4	75	12.9	195.4	4	30	77
4	0	205.7	71	11.4	205.7	4	30	77
5	0	217.3	84	10.7	217.3	4	30	75
6	0	223.2	80	9.1	223.2	4	30	84
7	0	213.7	4	2.5	213.7	4	30	2
8	0	220.1	10	1.5	220.1	4	30	2
9	0	226	21	0.02	226	4	30	4
10	0					4	30	

# Change the Instructional Weeks

## School Norms Calculator

Calculate

Reset

Subject	Status			Growth				
Math	Term		Fall	Term to Term				Fall to Spring
Grade	Instructional Week Offset	Grade Mean RIT Score	School Percentile	Observed Grade Mean Growth	Grade Mean RIT Score for Start Term	Instructional Week		Mean Gain Percentile
						Start	End	
K	0					4	30	
1	0					4	30	
2	0	181.5	73	12.8	181.5	2	32	14
3	0	195.4	75	12.9	195.4	2	32	47
4	0	205.7	71	11.4	205.7	2	32	59
5	0	217.3	84	10.7	217.3	2	32	58
6	0	223.2	80	9.1	223.2	2	32	75
7	0	213.7	4	2.5	213.7	2	32	1
8	0	220.1	10	1.5	220.1	2	32	1
9	0	226	21	0.02	226	2	32	4

# Types of Questions the School Norms Can Address

*How does the school level performance in mathematics for our 5th graders compare to the performance of 5th graders of other schools when students are tested at about the same point during the instructional year?*

**Our 5<sup>th</sup> graders performed at the 84<sup>th</sup>ile when compared to other schools in the nation that tested at about the same time.**



# Types of Questions the School Norms Can Address

*How does the school-level reading growth of our 4th graders, using the average of their gains, compare with the school-level reading growth of 4th graders from other schools?*

**Our 4<sup>th</sup> grader's average gain was at the 59<sup>th</sup>ile when compared to other schools in the nation that tested at about the same time.**





# View the 5 minute video



**Dr. Nate Jensen**  
Research Specialist  
Kingsbury Center at NWEA

**CC**  
Click to  
download  
video script